

4-BEDROOM

Type D1-G (PL)

133 sq m | 1432 sq ft

INCLUSIVE OF 13 SQM PES & 7 SQM AC LEDGE

Tower 16

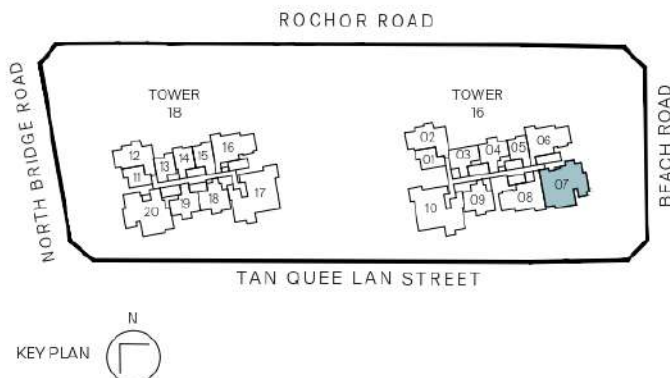
UNIT

#03-07



Legend (where applicable)

- | | |
|-------------------------------|--------------------------------|
| F - Fridge | WCH - Wine Chiller |
| IH - Induction Hob | W - Washer |
| GH - Gas Hob | D - Dryer |
| WM - Washer cum Dryer | DB - Distribution Board |
| SO - Steam Oven | SC - Shoe Cabinet |
| CO - Convectional Oven | |



All plans are subjected to amendments as may be approved by the relevant authorities. Floor areas are approximate measurements and are subjected to final survey.

* Balconies/PES are not to be enclosed except with a balcony screen which has been approved and complies with the Competent Authority's guidelines. For an illustration of the approved balcony screen, please refer to this brochure

4-BEDROOM

Type D1 (PL)

134 sq m | 1442 sq ft

INCLUSIVE OF 13 SQM BALCONY & 8 SQM AC LEDGE

Tower 16

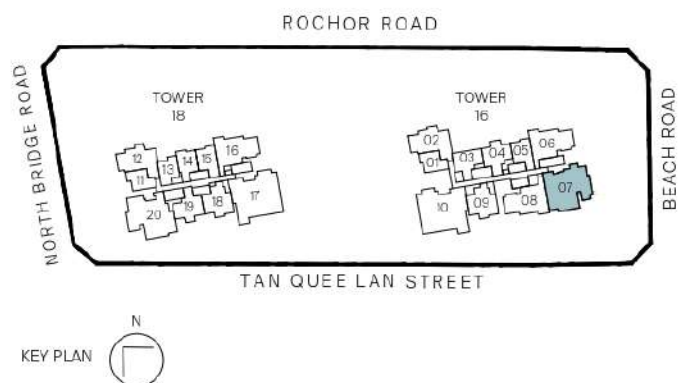
UNIT

#04-07 to #29-07



Legend (where applicable)

- | | |
|-------------------------------|--------------------------------|
| F - Fridge | WCH - Wine Chiller |
| IH - Induction Hob | W - Washer |
| GH - Gas Hob | D - Dryer |
| WM - Washer cum Dryer | DB - Distribution Board |
| SO - Steam Oven | SC - Shoe Cabinet |
| CO - Convectional Oven | |



All plans are subjected to amendments as may be approved by the relevant authorities. Floor areas are approximate measurements and are subjected to final survey.
 * Balconies/PES are not to be enclosed except with a balcony screen which has been approved and complies with the Competent Authority's guidelines.
 For an illustration of the approved balcony screen, please refer to this brochure

4-BEDROOM

Type D2-G (PL)

134 sq m | 1442 sq ft

INCLUSIVE OF 14 SQM PES & 6 SQM AC LEDGE

Tower 18

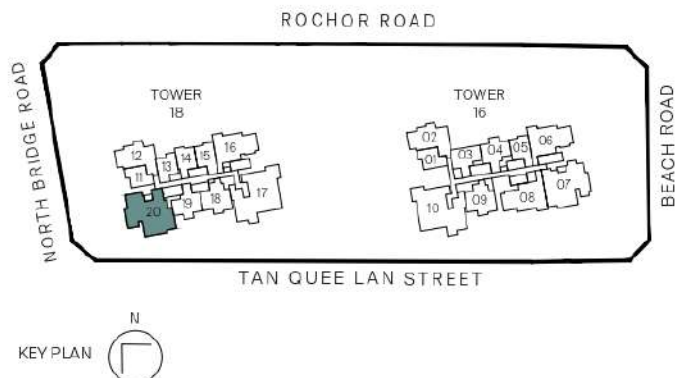
UNIT

#03-20



Legend (where applicable)

- | | |
|-------------------------------|--------------------------------|
| F - Fridge | WCH - Wine Chiller |
| IH - Induction Hob | W - Washer |
| GH - Gas Hob | D - Dryer |
| WM - Washer cum Dryer | DB - Distribution Board |
| SO - Steam Oven | SC - Shoe Cabinet |
| CO - Convectional Oven | |



All plans are subjected to amendments as may be approved by the relevant authorities. Floor areas are approximate measurements and are subjected to final survey.

* Balconies/PES are not to be enclosed except with a balcony screen which has been approved and complies with the Competent Authority's guidelines. For an illustration of the approved balcony screen, please refer to this brochure

4-BEDROOM

Type D2 (PL)

136 sq m | 1464 sq ft

INCLUSIVE OF 14 SQM BALCONY & 8 SQM AC LEDGE

Tower 18

UNIT

#04-20 to #29-20

Type D2-R (PL)

136 sq m | 1464 sq ft

INCLUSIVE OF 14 SQM BALCONY & 8 SQM AC LEDGE

Tower 18

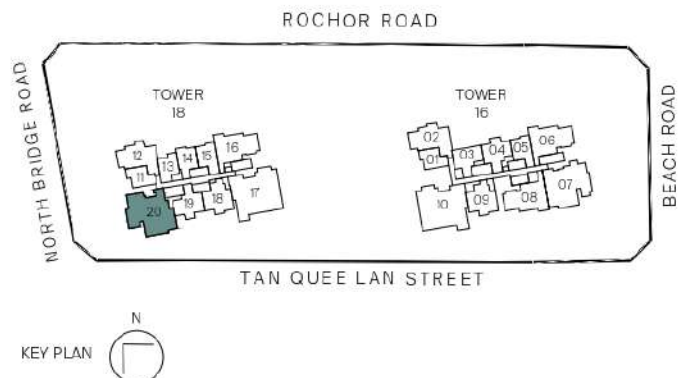
UNIT

#30-20



Legend (where applicable)

- | | |
|-------------------------------|--------------------------------|
| F - Fridge | WCH - Wine Chiller |
| IH - Induction Hob | W - Washer |
| GH - Gas Hcb | D - Dryer |
| WM - Washer cum Dryer | DB - Distribution Board |
| SO - Steam Oven | SC - Shoe Cabinet |
| CO - Convectional Oven | |



All plans are subjected to amendments as may be approved by the relevant authorities. Floor areas are approximate measurements and are subjected to final survey.

* Balconies/PES are not to be enclosed except with a balcony screen which has been approved and complies with the Competent Authority's guidelines. For an illustration of the approved balcony screen, please refer to this brochure

4-BEDROOM PREMIUM

Type D3P-G (PL)

161 sq m | 1733 sqft

INCLUSIVE OF 16 SQM PES & 7 SQM AC LEDGE

Tower 16

UNIT

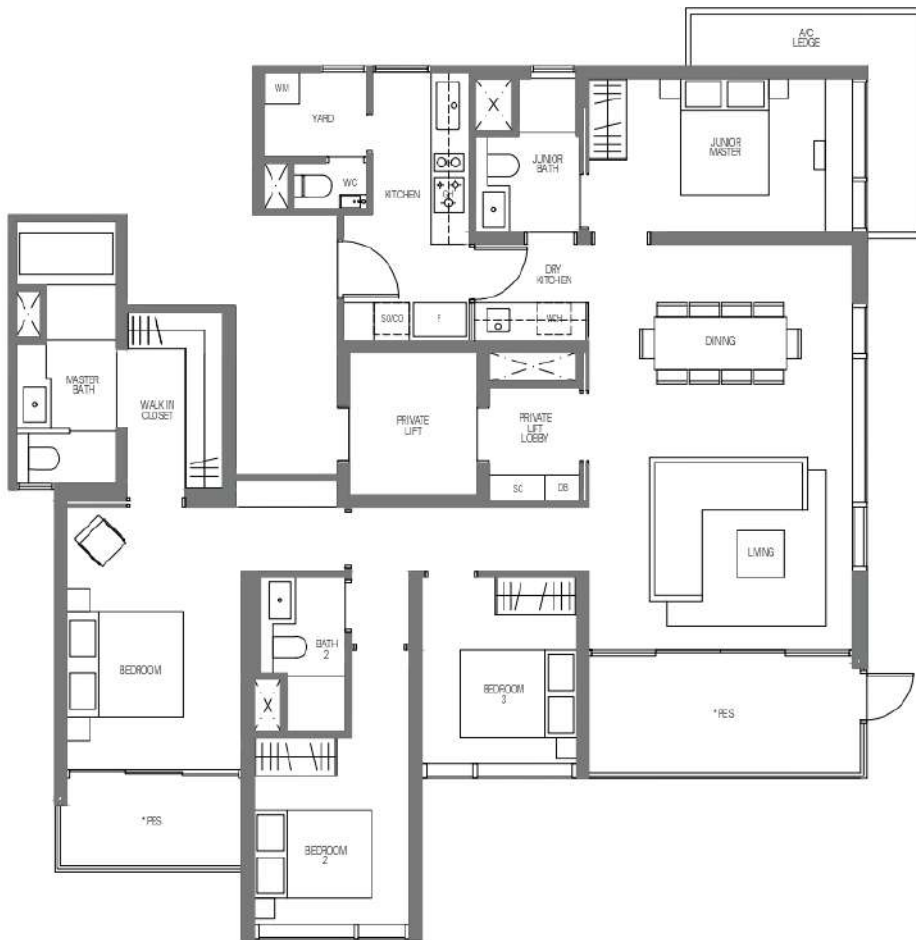
#03-10*

Tower 18

UNIT

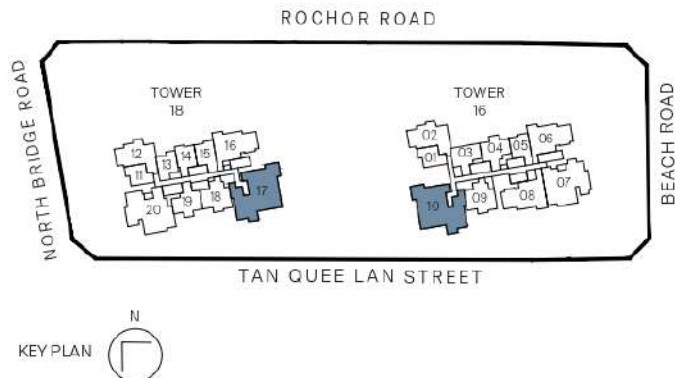
#03-17

* MIRROR IMAGE



Legend (where applicable)

- | | |
|-------------------------------|--------------------------------|
| F - Fridge | WCH - Wine Chiller |
| IH - Induction Hob | W - Washer |
| GH - Gas Hob | D - Dryer |
| WM - Washer cum Dryer | DB - Distribution Board |
| SO - Steam Oven | SC - Shoe Cabinet |
| CO - Convectional Oven | |



All plans are subjected to amendments as may be approved by the relevant authorities. Floor areas are approximate measurements and are subjected to final survey.

* Balconies/PES are not to be enclosed except with a balcony screen which has been approved and complies with the Competent Authority's guidelines. For an illustration of the approved balcony screen, please refer to this brochure

4-BEDROOM PREMIUM

Type D3P (PL)

168 sqm | 1808 sq ft

INCLUSIVE OF 16 SQM BALCONY & 8 SQM AC LEDGE

Tower 16

UNIT

#04-10* to #29-10*

Tower 18

UNIT

#04-17 to #29-17

Type D3P-R (PL)

168 sqm | 1808 sq ft

INCLUSIVE OF 16 SQM BALCONY & 8 SQM AC LEDGE

Tower 16

UNIT

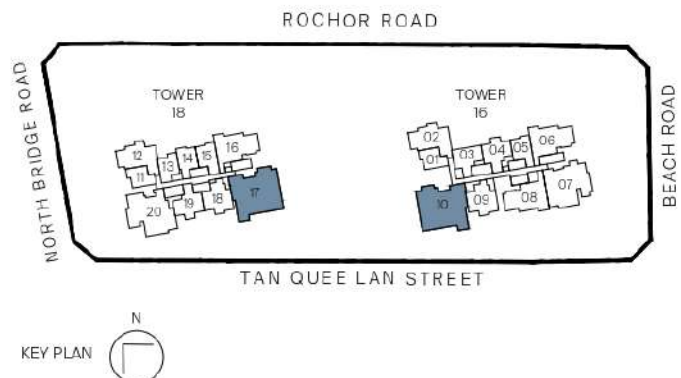
#30-10*

* MIRROR IMAGE



Legend (where applicable)

- | | |
|------------------------|-------------------------|
| F - Fridge | WCH - Wine Chiller |
| IH - Induction Hob | W - Washer |
| GH - Gas Hcb | D - Dryer |
| WM - Washer cum Dryer | DB - Distribution Board |
| SO - Steam Oven | SC - Shoe Cabinet |
| CO - Convectional Oven | |



All plans are subjected to amendments as may be approved by the relevant authorities. Floor areas are approximate measurements and are subjected to final survey.

* Balconies/PES are not to be enclosed except with a balcony screen which has been approved and complies with the Competent Authority's guidelines. For an illustration of the approved balcony screen, please refer to this brochure