

3-BEDROOM

Type C1

84 sq m | 904 sq ft
 INCLUSIVE OF 7 SQM AC LEDGE

Tower 16
 UNIT
 #03-02 to #29-02

Tower 18
 UNIT
 #03-12 to #29-12

Type C1-R

84 sq m | 904 sq ft
 INCLUSIVE OF 7 SQM AC LEDGE

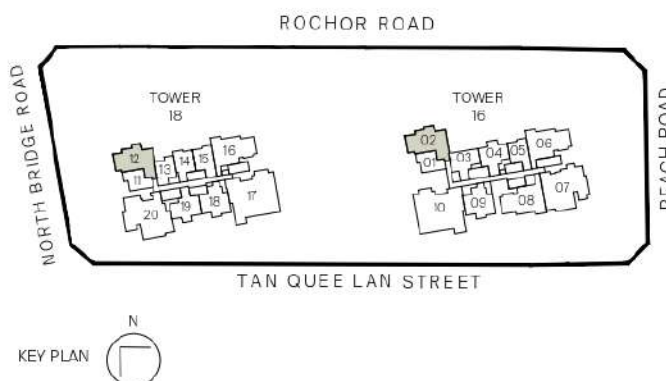
Tower 16
 UNIT
 #30-02

Tower 18
 UNIT
 #30-12



Legend (where applicable)

- | | |
|-------------------------------|--------------------------------|
| F - Fridge | WCH - Wine Chiller |
| IH - Induction Hob | W - Washer |
| GH - Gas Hcb | D - Dryer |
| WM - Washer cum Dryer | DB - Distribution Board |
| SO - Combi Steam Oven | SC - Shoe Cabinet |
| CO - Convectional Oven | |



All plans are subjected to amendments as may be approved by the relevant authorities. Floor areas are approximate measurements and are subjected to final survey.

3-BEDROOM

Type C2-G

99 sq m | 1066 sq ft

INCLUSIVE OF 6 SQM PES & 5 SQM AC LEDGE

Tower 16

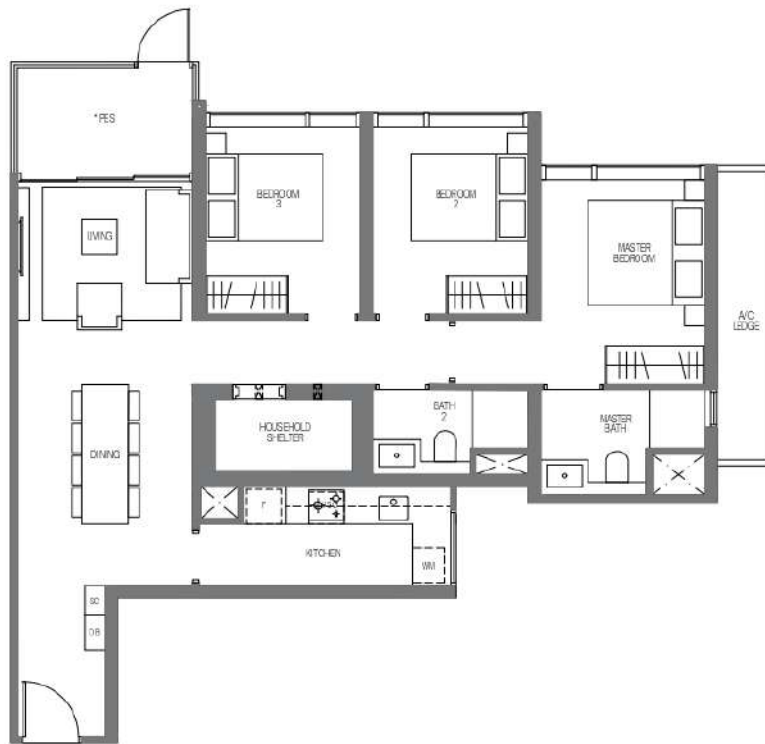
UNIT

#03-06

Tower 18

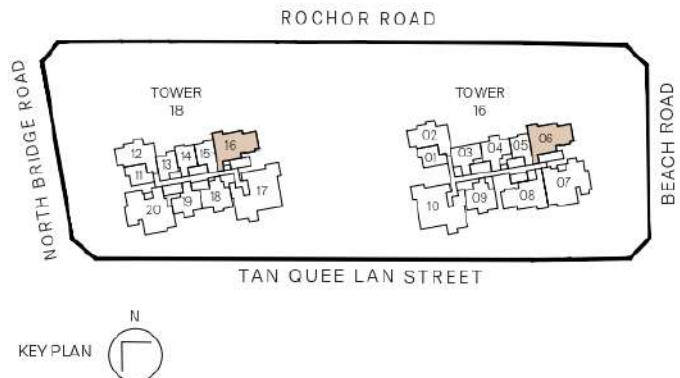
UNIT

#03-16



Legend (where applicable)

- | | |
|-------------------------------|--------------------------------|
| F - Fridge | WCH - Wine Chiller |
| IH - Induction Hob | W - Washer |
| GH - Gas Hob | D - Dryer |
| WM - Washer cum Dryer | DB - Distribution Board |
| SO - Combi Steam Oven | SC - Shoe Cabinet |
| CO - Convectional Oven | |



All plans are subjected to amendments as may be approved by the relevant authorities. Floor areas are approximate measurements and are subjected to final survey.

* Balconies/PES are not to be enclosed except with a balcony screen which has been approved and complies with the Competent Authority's guidelines. For an illustration of the approved balcony screen, please refer to this brochure

3-BEDROOM

Type C2

99 sq m | 1066 sq ft

INCLUSIVE OF 6 SQM BALCONY & 5 SQM AC LEDGE

Tower 16

UNIT

#04-06 to #29-06

Tower 18

UNIT

#04-16 to #29-16

Type C2-R

99 sq m | 1066 sq ft

INCLUSIVE OF 6 SQM BALCONY & 5 SQM AC LEDGE

Tower 16

UNIT

#30-06

Tower 18

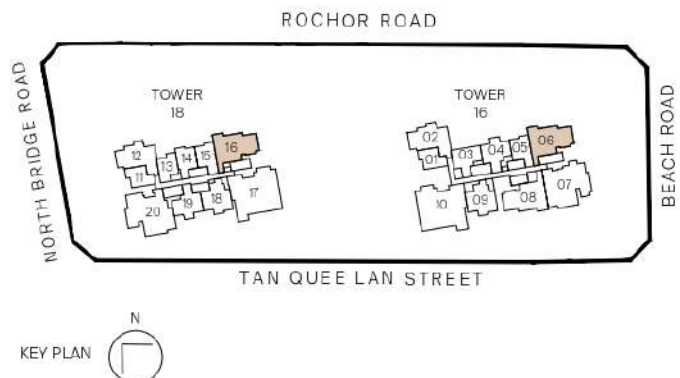
UNIT

#30-16



Legend (where applicable)

- | | |
|-------------------------------|--------------------------------|
| F - Fridge | WCH - Wine Chiller |
| IH - Induction Hob | W - Washer |
| GH - Gas Hcb | D - Dryer |
| WM - Washer cum Dryer | DB - Distribution Board |
| SO - Combi Steam Oven | SC - Shoe Cabinet |
| CO - Convectional Oven | |



All plans are subjected to amendments as may be approved by the relevant authorities. Floor areas are approximate measurements and are subjected to final survey.

* Balconies/PES are not to be enclosed except with a balcony screen which has been approved and complies with the Competent Authority's guidelines. For an illustration of the approved balcony screen, please refer to this brochure

3-BEDROOM

Type C3-G

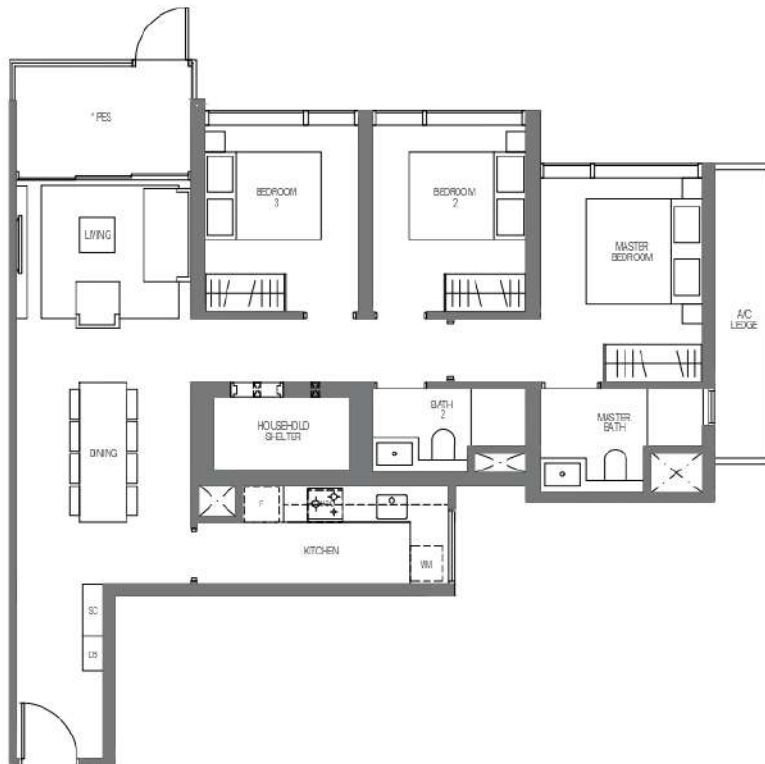
99 sq m | 1066 sq ft

INCLUSIVE OF 6 SQM PES & 5 SQM AC LEDGE

Tower 16

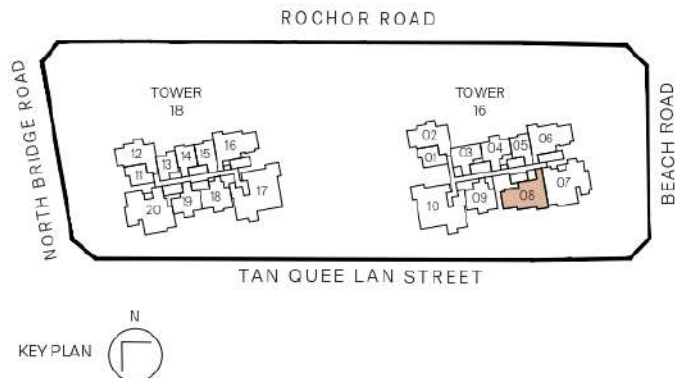
UNIT

#03-08



Legend (where applicable)

- | | |
|-------------------------------|--------------------------------|
| F - Fridge | WCH - Wine Chiller |
| IH - Induction Hob | W - Washer |
| GH - Gas Hob | D - Dryer |
| WM - Washer cum Dryer | DB - Distribution Board |
| SO - Combi Steam Oven | SC - Shoe Cabinet |
| CO - Convectional Oven | |



All plans are subjected to amendments as may be approved by the relevant authorities. Floor areas are approximate measurements and are subjected to final survey.

* Balconies/PES are not to be enclosed except with a balcony screen which has been approved and complies with the Competent Authority's guidelines. For an illustration of the approved balcony screen, please refer to this brochure

3-BEDROOM

Type C3

99 sq m | 1066 sq ft

INCLUSIVE OF 6 SQM BALCONY & 5 SQM AC LEDGE

Tower 16

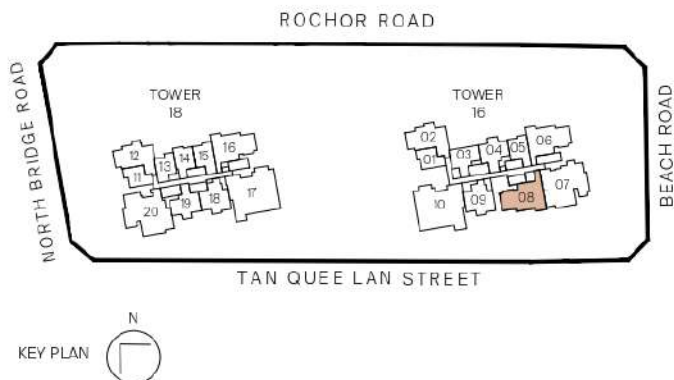
UNIT

#04-08 to #29-08



Legend (where applicable)

- | | |
|-------------------------------|--------------------------------|
| F - Fridge | WCH - Wine Chiller |
| IH - Induction Hob | W - Washer |
| GH - Gas Hcb | D - Dryer |
| WM - Washer cum Dryer | DB - Distribution Board |
| SO - Combi Steam Oven | SC - Shoe Cabinet |
| CO - Convectional Oven | |



All plans are subjected to amendments as may be approved by the relevant authorities. Floor areas are approximate measurements and are subjected to final survey.

* Balconies/PES are not to be enclosed except with a balcony screen which has been approved and complies with the Competent Authority's guidelines. For an illustration of the approved balcony screen, please refer to this brochure