

# 4 - BEDROOM

TYPE D1(PL)

TOWER 16

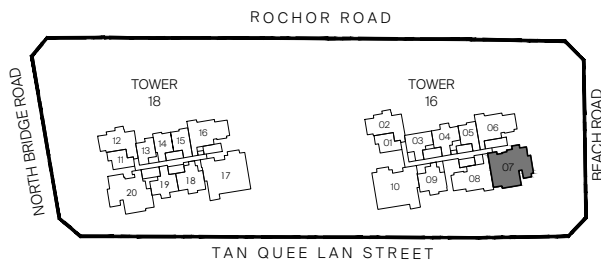
UNIT

#04-07 to #29-07



LEGEND (where applicable) :

- |                       |                        |                         |
|-----------------------|------------------------|-------------------------|
| F - Fridge            | SO - Steam Oven        | D - Dryer               |
| IH - Induction Hob    | CO - Convectional Oven | DB - Distribution Board |
| GH - Gas Hob          | WCH - Wine Chiller     | SC - Shoe Cabinet       |
| WM - Washer cum Dryer | W - Washer             |                         |



All plans are subjected to amendments as may be approved by the relevant authorities.  
 Floor areas are approximate measurements and are subjected to final survey.  
 BP Approval No. A1720-00019-2019-BP01 dated 23/11/2020

KEY PLAN



# 4 - BEDROOM PREMIUM

TYPE D3P(PL)

TOWER 16

UNIT

#04-10\* to #29-10\*

TOWER 18

UNIT

#04-17 to #29-17

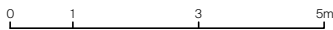
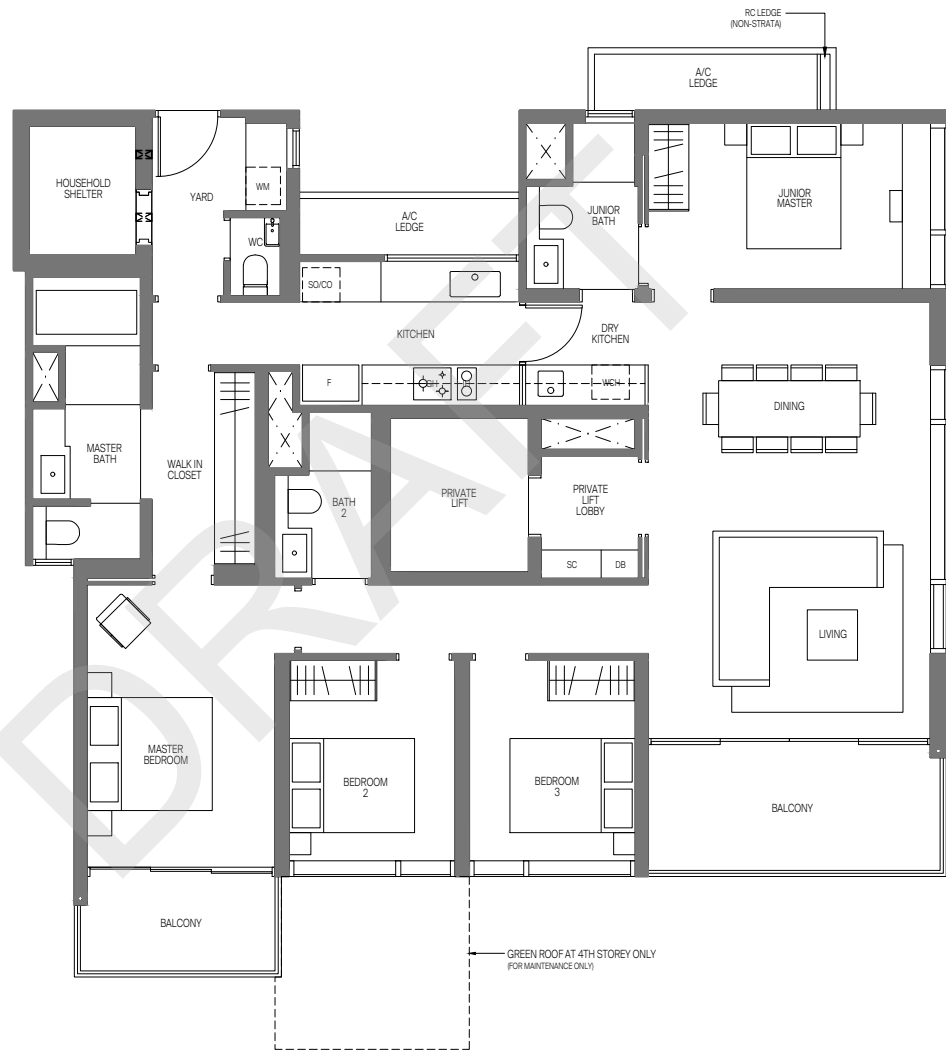
TYPE D3P-R(PL)

TOWER 16

UNIT

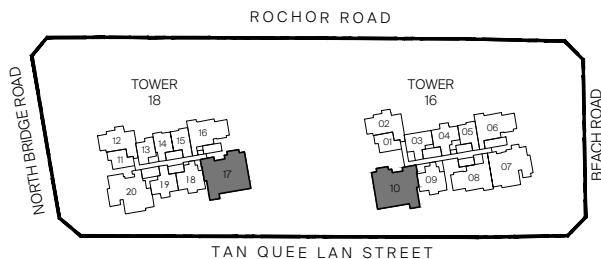
#30-10\*

\* MIRROR IMAGE



LEGEND (where applicable):

F - Fridge	SO - Steam Oven	D - Dryer
IH - Induction Hob	CO - Convectional Oven	DB - Distribution Board
GH - Gas Hob	WCH - Wine Chiller	SC - Shoe Cabinet
WM - Washer cum Dryer	W - Washer	



All plans are subjected to amendments as may be approved by the relevant authorities.  
 Floor areas are approximate measurements and are subjected to final survey.  
 BP Approval No. A1720-00019-2019-BP01 dated 23/11/2020

KEY PLAN

